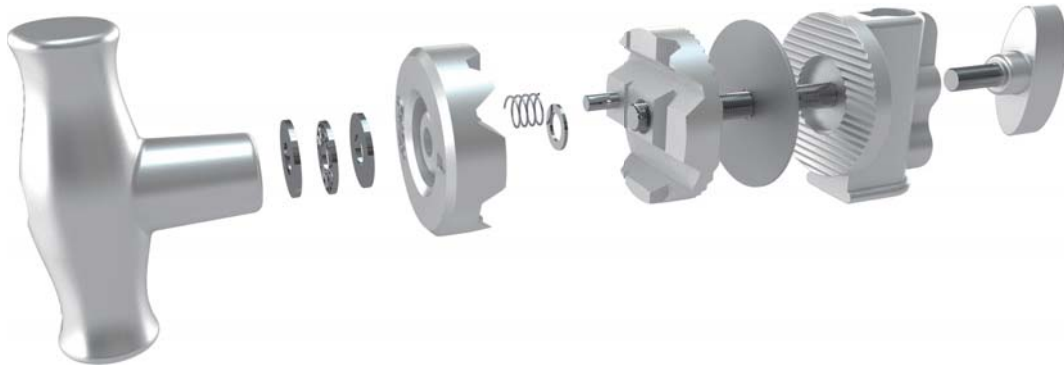


KUPO Grip Head (also Gobohead) is specially designed to be mounted on C-stand with its 16mm socket. Four different size and rotatable V jaw allows you to attach the scrims, flags, cutters, reflectors and backdrops to meet various requirements of lighting control.



More Features:

1. Aluminum casting body with 16mm mounting hole for a 5/8" (Baby) stud or stand top.
2. Non-slip, Non stick aluminum braking pad instead of fiber which would be deteriorate offering positive lock and precise control.
3. Large size T-handle is ergonomic design for biggest torque - follow right hand rule.
4. Four V jaws for different dia. (5/8", 1/2", 3/8", 1/4") pins or tube.
5. V jaws with special tooth design offers a better grip.
6. Steel material makes the located pin sturdier than aluminum casting pin.
7. Stainless steel central bolt with fixed solid pin provides most durable construction.
8. Dedicated bearing added to reinforce the torque for stronger grip.
9. A solid retaining pin to fix the casting body with stainless steel central bolt.



KCP-200B
2-1/2" Grip Head - Black



KCP-200P
2-1/2" Grip Head - Polish



KCP-200B/P - J
Grip Head with
17mm Spigot - Black/Polish



A solid retaining pin to fix the casting body with stainless steel central bolt.

Grip arm, (or boom arm or gobo arm) for C stand is normally used in cooperated with a KCP-200, is designed to support anything from small flash head, moonlights, scrims and flag, to large tungsten units and muslin backdrop. The dia. 5/8" arm is processed in matte finish increasing the friction when works with grip head V jaw and reduce the reflection on set. An extra reinforced roller pin to fix the extension arm with grip head tightly.



KCP-220B
20" Extention Grip Arm - Black
KCP-220P
20" Extention Grip Arm - Polish



KCP-240B
40" Extention Grip Arm - Black
KCP-240P
40" Extention Grip Arm - Polish

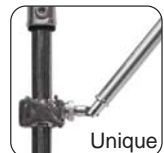


Extra reinforced roller pin to fix extension arm.

KCP-215P Grip arm support



This is specially designed for giving the most support for grip arm very easy. It is constructed by an extendable aluminum column and comes with the ball joint pivot clamp in one end and with an angle-adjustable attachments in the other end. The attachments is also easy to be fitted into KCP-930 which is lightweight aluminum clamp for quickly coupling the stand tube from 35mm to 50mm with its spring locking design. With this functional support arm, not only loading weight of grip arm could be increased but sliding problem could be solved.



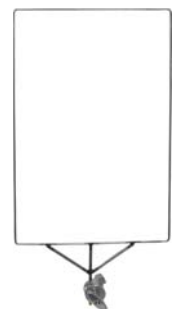
KS-022 Grip arm pin

5/8" steel baby pin, with 5" (12.7cm) length, is designed for fitting into the grip head and can be connected to the lighting fixtures or other grip accessories.



Kupo Flag frame is made by dia. 5mm spring steel with a dia. 9.5mm mounting pin.

KCP-F1824 Flag Frame 18" x 24"
KCP-F2436 Flag Frame 24" x 36"



Kupo Open frame is made by dia. 6.3mm spring steel with a dia. 9.5mm mounting pin.

KCP-OF1824 Open Frame 18" x 24"
KCP-OF2436 Open Frame 24" x 36"

